

PX9600 Image Capture with CM96XX Ethernet

1) Scanner PM9600 must be in Radio High Speed Mode (default)!

High Speed



Low Speed

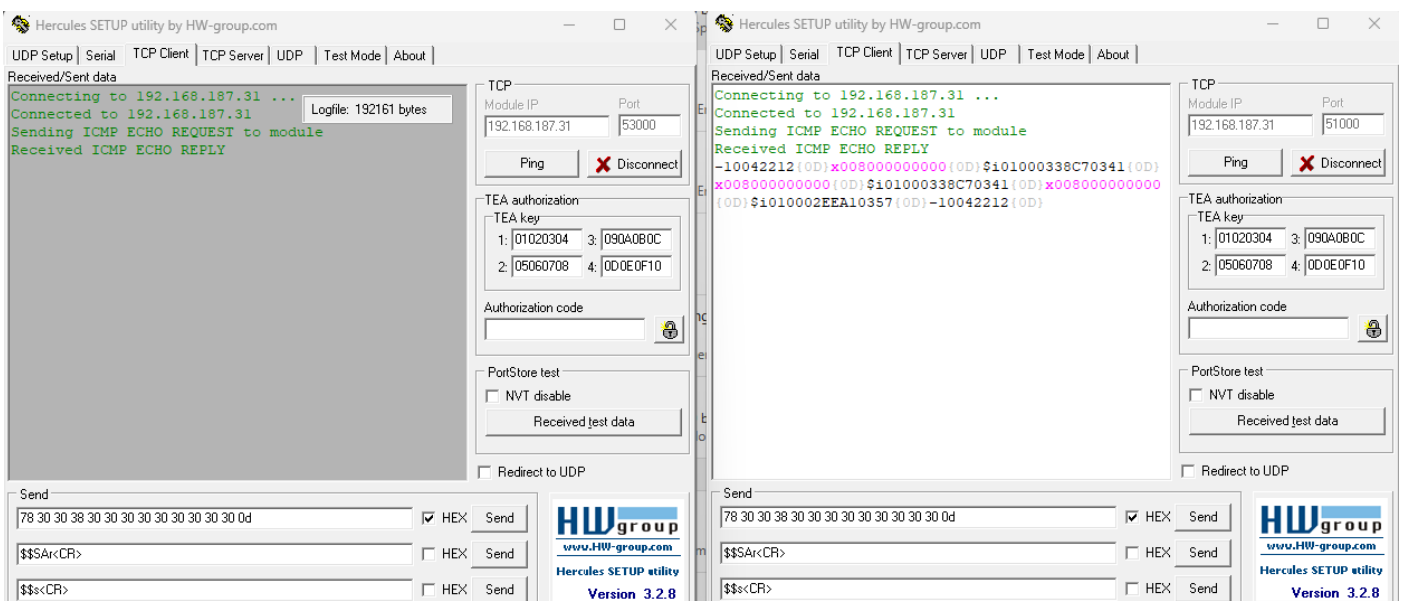


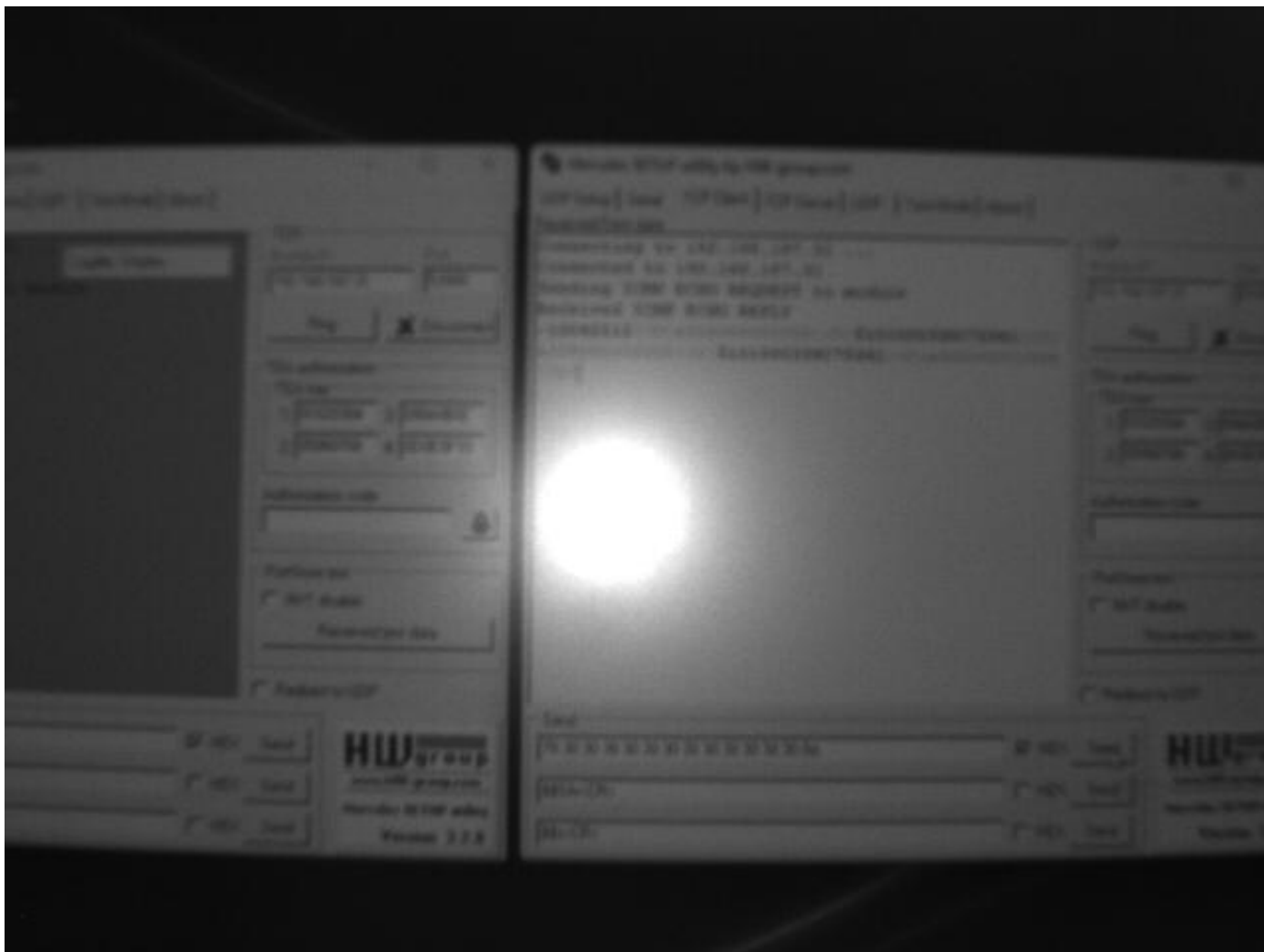
2) Scanner PM 9600 must be in point to point mode:



\$P,CRFPP01,P\r

Example:





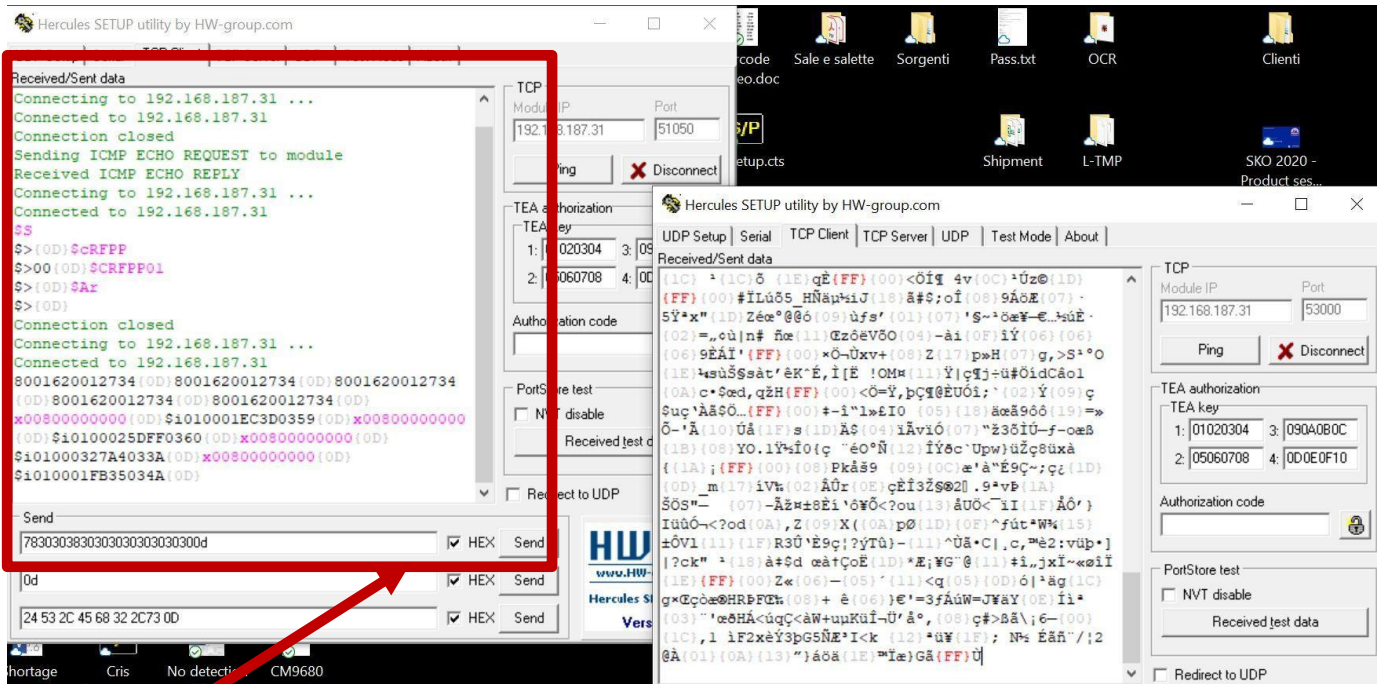
How to do exactly:

1

- Following several requests from field, the image download has implemented in the CM968x.
- Image transfer uses a dedicated socket port 53000.
- To start an image download session, a specific command has to be sent on the data socket port 51000
- Supports the image format supported by the product (JPG and BMP)
- Image download commands are the same already used on the HHS 2D readers in USB COM:



- x018000000000 (capture on trigger)
- x008000000000 (capture immediately)
- If you are using a mobile product, you have to set a point to point connection to receive the image.
- Supported by all models: D/M/BT



- How to test:
- Open 2 Hercules sessions. One on the 51000 port, the other on the 53000
- On the 53000 socket, enable the log (right click of the mouse on the data window and create new file).
- On the 51000 port, send the image acquisition command x008000000000[CR] to start the image acquisition process
- After sending the command on the 5100, you can see the data flowing on the 53000.
- When all the data has received, close the log session on the 53000 port

