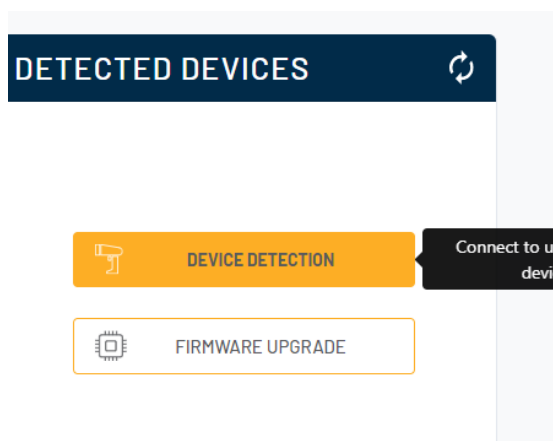
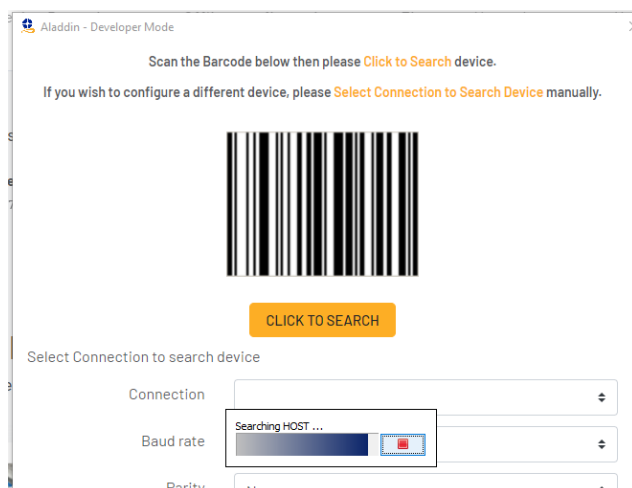


Guide to saving XML file from scanner

1. COPY AND PASTE THE LINK BELOW IN A BROWSER OF YOUR CHOICE TO DIRECTLY START DOWNLOADING OUR ALADDIN SOFTWARE IN ITS 3.0.2 VERSION
2. <https://cdn.datalogic.com/Download?iddwnfile=36854>
3. IF, FOR ANY REASON, YOU WISH TO VISIT OUR WEBSITE PAGE WHERE THE SOFTWARE IS LOCATED, COPY AND PASTE THE LINK BELOW IN A BROWSER OF YOUR CHOICE AND YOU WILL BE TAKEN THERE
4. https://www.datalogic.com/eng/search.html?search_txt=ALADDIN
5. INSTALL ALADDIN WITH ADMINISTRATIVE PRIVILEGES AND LAUNCH IT, IF ASKED, ALLOW IT TO LOAD ALL UPDATES
6. ONCE STARTED, IT MAY TAKE A FEW MINUTES, CLICK ON **"DEVICE DETECTION"**

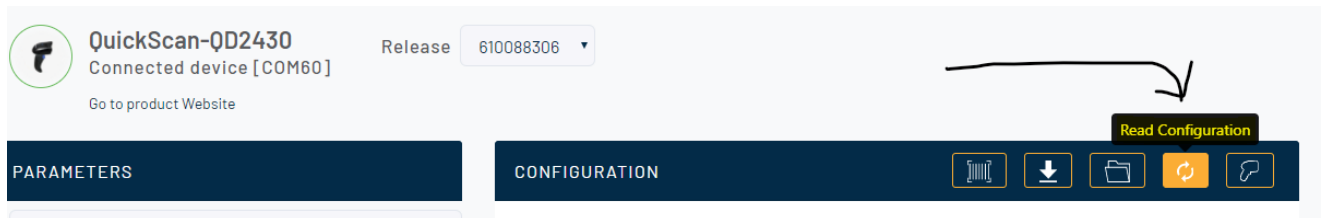


7. **"SEARCH ON CONNECTION"**

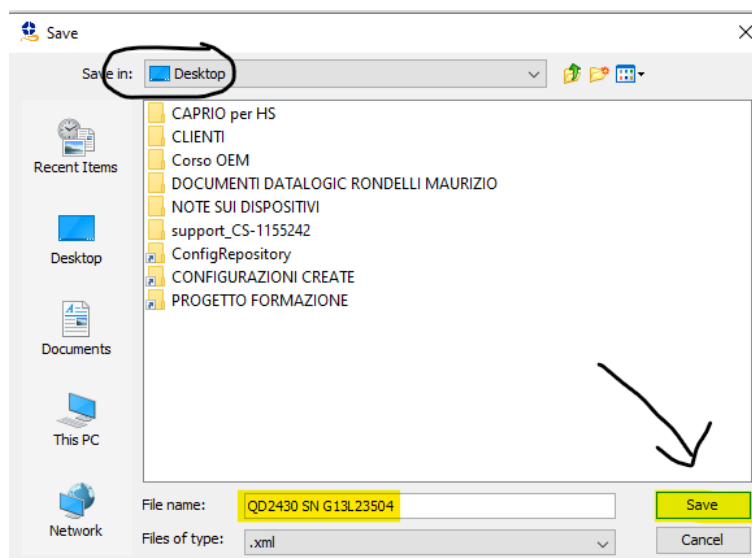


Guide to saving XML file from scanner

8. THE DEVICE MAY ALREADY BE VISIBLE, IF IT IS NOT, PLEASE SCAN THE BARCODE AND PROCEED TO "**CLICK TO SEARCH**".
9. IF THIS DOES NOT WORK, PLEASE REFER TO THE "FORCE CONNECTING GUIDE"
10. ONCE THE DEVICE IS CONNECTED, AT THE TOP RIGHT OF THE MAIN CENTRAL PANE SELECT THE READ CONFIGURATION ICON, THIS WILL SCAN THE DEVICE FOR ITS ENTIRE CONFIGURATION, NOTHING WILL HAPPEN IN THE MAIN WINDOW AS THIS IS A BACKGROUND PROCESS.



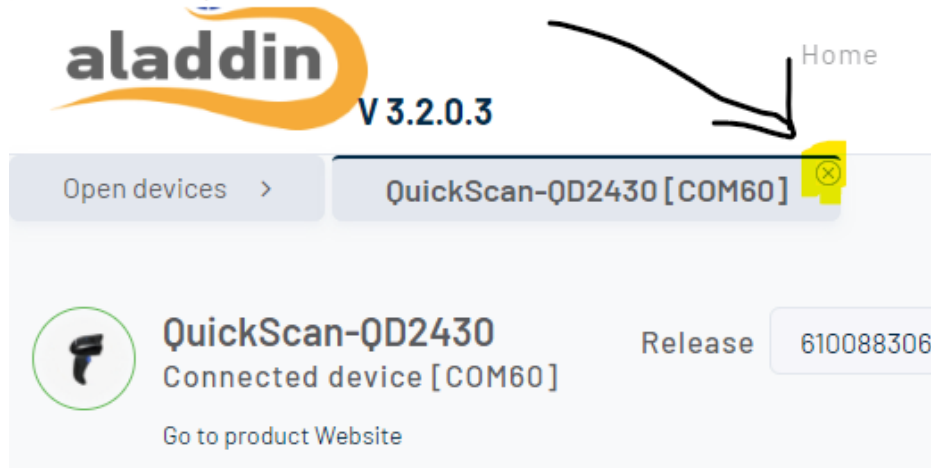
11. NOW YOU CAN SAVE THE FILE, in .xml FORMAT IN A FOLDER OF YOUR CHOICE WITH THE NAME OF THE DEVICE AND THE S/N



12. NOW YOU CAN DISCONNECT THE SCANNER BY CLICKING ON THE CROSS, DON'T WORRY ABOUT THE MODEL IN THE PICTURE IT IS THE ONE I HAD AVAILABLE NOW

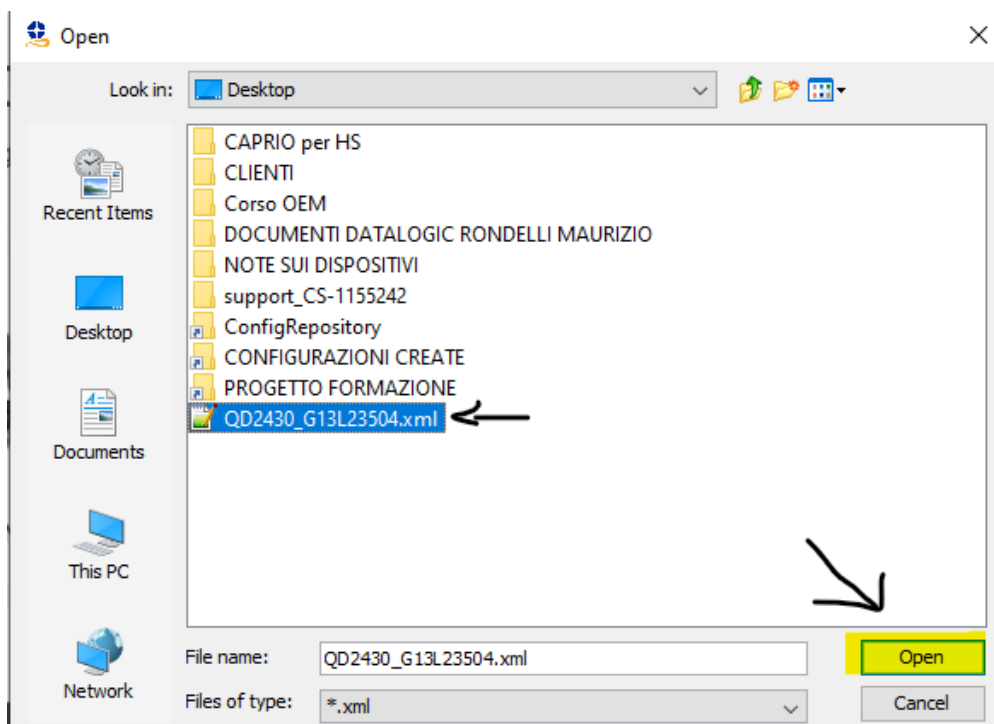
Guide to saving XML file from scanner

Aladdin - Developer Mode



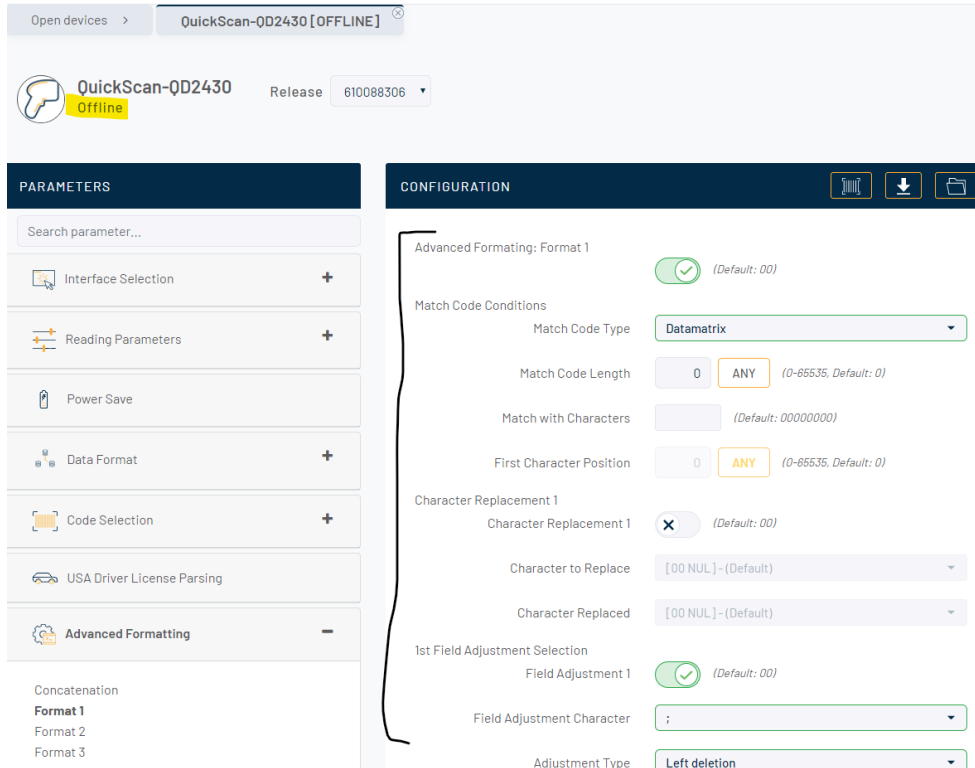
13. NOW YOU HAVE THE FILE FOR YOU TO INSPECT, IN ORDER TO TWEAK THE CONFIGURATION IF YOU NEED TO, BEFORE LOADING ONTO ANOTHER SCANNER, THERE IS NO NEED, AT THIS STAGE, TO HAVE A DEVICE CONNECTED

14.



Guide to saving XML file from scanner

15. YOU WILL SEE THE CONFIGURATION EXACTLY AS YOU PROGRAMMED IT BEFORE, WITH COMMAND TOGGLES AND DROPDOWN LISTS TO YOUR DISPOSAL.



16. YOU CAN MODIFY THE FILE, SAVE IT IN DIFFERENT COPIES FOR DIFFERENT DEVICES IF YOU NEED TO, USING THE ONE THAT WORKS AS A BASE, AND LATER LOAD EACH ONE ON ITS TARGET DEVICE.