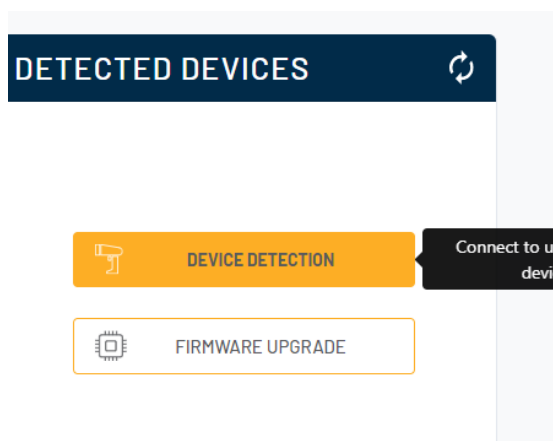
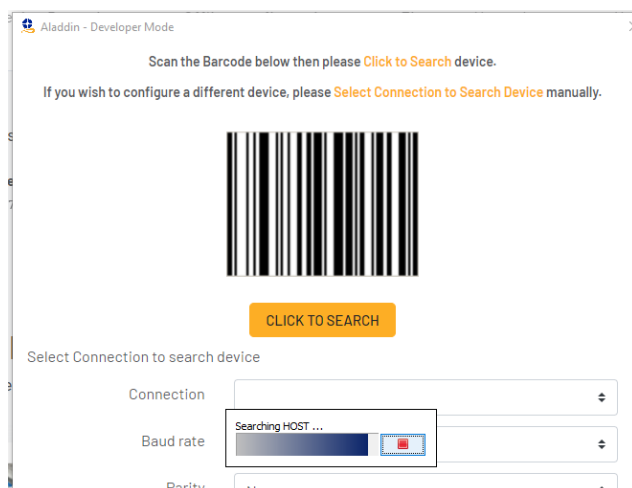


Guide to saving CCF file from scanner

1. COPY AND PASTE THE LINK BELOW IN A BROWSER OF YOUR CHOICE TO DIRECTLY START DOWNLOADING OUR ALADDIN SOFTWARE IN ITS 3.0.2 VERSION
2. <https://cdn.datalogic.com/Download?iddwnfile=36854>
3. IF, FOR ANY REASON, YOU WISH TO VISIT OUR WEBSITE PAGE WHERE THE SOFTWARE IS LOCATED, COPY AND PASTE THE LINK BELOW IN A BROWSER OF YOUR CHOICE AND YOU WILL BE TAKEN THERE
4. https://www.datalogic.com/eng/search.html?search_txt=ALADDIN
5. INSTALL ALADDIN WITH ADMINISTRATIVE PRIVILEGES AND LAUNCH IT, IF ASKED, ALLOW IT TO LOAD ALL UPDATES
6. ONCE STARTED, IT MAY TAKE A FEW MINUTES, CLICK ON **"DEVICE DETECTION"**



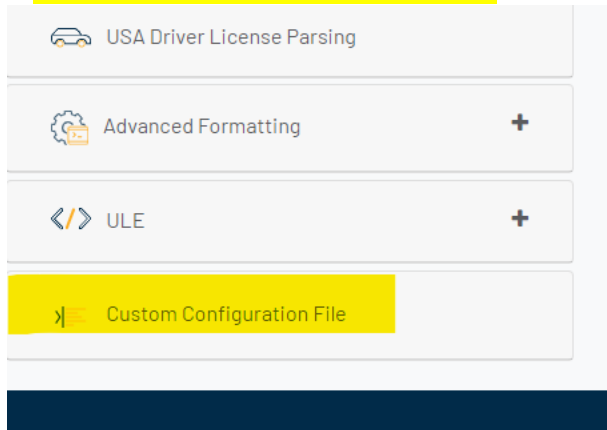
7. **"SEARCH ON CONNECTION"**



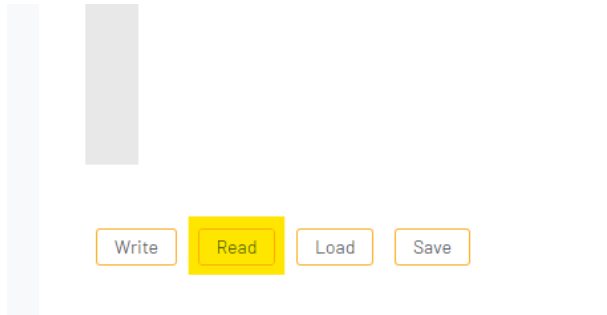
Guide to saving CCF file from scanner

8. THE DEVICE MAY ALREADY BE VISIBLE, IF IT IS NOT, PLEASE SCAN THE BARCODE AND PROCEED TO "**CLICK TO SEARCH**".
- 9.
10. IF THIS DOES NOT WORK, PLEASE REFER TO THE "FORCE CONNECTING GUIDE"

11. ONCE THE DEVICE IS CONNECTED, AT THE BOTTOM LEFT OF THE PAGE SELECT **CUSTOM CONFIGURATION FILE**



12. LOAD THE FILE INTO THE SOFTWARE USING THE **READ** BUTTON AND WAIT FOR THE PROCESS TO TERMINATE



13. SAVE THE FILE IN .txt FORMAT IN A FOLDER OF YOUR CHOICE WITH THE NAME OF THE DEVICE AND S/N

```
23 $As ; Commit Interface Class to u
24 $As ; Commit Interface Class to f
25 ;
26 ;-----<RS232-STD>-----
27 $M05 ; Load Master defaults and set
28 $CSNOG02 ; Object Gone Time (1-20 x 500 msec.):
29 $CLAGL03 ; Good Read LED Duration (0-255 x 100 m
30 $As ; Commit Interface Class to u
```



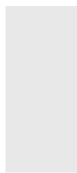
Guide to saving CCF file from scanner

14. NOW YOU CAN DISCONNECT THE SCANNER BY CLICKING ON THE CROSS, DON'T WORRY ABOUT THE MODEL IN THE PICTURE IT IS THE ONE I HAD AVAILABLE NOW



THE FOLLOWING PART IS FOR LOADING SUCH SAVED FILE ON A DEVICE OF THE SAME EXACT MODEL

15. NOW DO THE SAME EXACT PROCES TO CONNECT ANOTHER SCANNER, AND LOAD AND WRITE ON IT THE **CUSTOM CONFIGURATION FILE** JUST SAVED



16. DEVICES NOW HAVE EXACTLY THE SAME CONFIGURATION ON BOARD

```
25 ;  
26 ;-----<RS232-STD>-----  
27 $M05 ; Load Master defaults and  
28 $CSNOG02 ; Object Gone Time (1-20 x 500 msec  
29 $CLAGL03 ; Good Read LED Duration (0-255 x 1  
30 $As ; Commit Interface Class
```

