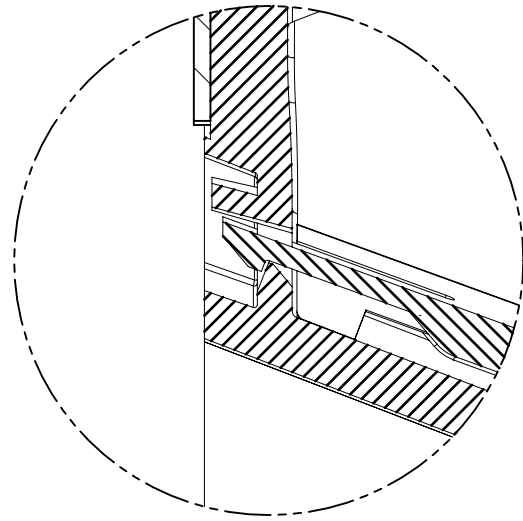
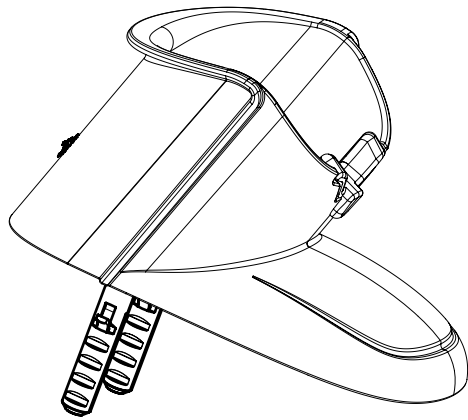


A-A



DETAIL B
SCALE 2:1



VIEW ISO
SCALE 1:2

6	163199690	STO - GMC700	1
5	163199790	ANCILLARY ADHESIVE	1
4	281091800	ADAPTER HOLDER DESK	1
3	019241000	PLASTIC PLUG	2
2	10158004	ZINC PLATED SCREW UNI EN 7049 4.2x25	2
1	278198500	HOLDER DESK	1
POSITION	MPR SAP CODE	DESCRIPTION	QTY

MOD.	DRW.	REV.	CHANGE	NUMBER	DESCRIPTION	DATE	DESIGNED BY	APPROVED BY
NOTES					DATE (dd/mm/yyyy)	05/02/2019	SCALE	UNIT
					DESIGNED BY	S. TROPOLI	1 : 1	mm
					APPROVED BY	I. MUSIANI	MOLD N.	
					NAME		PART N.	PART REV.
							700323500	A
							PAGE 1 OF 1	DRW. REV. 01
							PROJECT POWERSCAN	SHEET SIZE A2



HOLDER DESK

NOTES

1. PART & DIMENSIONS

1.1 THIS PART WAS GENERATED FROM 3D CAD MODEL FILE:
TC PN MP023100/00.

1.2 GENERAL TOLERANCES **DIN 16742:2013-10**. UNLESS OTHERWISE SPECIFIED USE TOLERANCE GROUP INDICATED IN TOLERANCE TABLE

1.3 ALL DIMENSIONS AND FEATURES NOT DEFINED ON THE DRAWING SHALL BE CONTROLLED BY THE 3D MODEL.

1.4 ALL DIMENSIONS IN ROUND BRACKETS ARE ONLY FOR REFERENCE
WITH TOLERANCE EXCLUDED.

2. MATERIALS

2.1 MATERIAL AND COLOUR: SEE VERSION TABLE

2.2 REGULATORY CONTROLLED MATERIAL, NO SUBSTITUTIONS ALLOWED
2.3 REGRIND MATERIAL NOT ALLOWED, PART TO BE MOLDED USING
100% VIRGIN MATERIAL

2.4 MELT VOLUME RATE SHALL BE CARRIED OUT ACCORDING TO ISO 1133.

AFTER MOLDING AN INCREASE OF 20% OF M.V.R. COMPARED TO VIRGIN MATERIAL GRAIN IS ALLOWED.

2.5 IF COLOR IS NOT A STANDARD FROM RESIN SUPPLIER, COLOR SHALL MEET VALUE IN THE 'COLOUR TABLE',

MEASUREMENTS SHALL BE TAKEN AT LOCATION 'X1',... 'Xn'.
MEASUREMENTS SHALL BE MADE USING D65 ILLUMINANT,

2.6 MECHANICAL PROPERTIES MUST BE GUARANTEED ACCORDING TO DATALOGIC FALLING WEIGHT IMPACT STANDARD INCLUDED IN

GM_SSM_004_SPP

COMPLIANT MATERIALS: THE EC DIRECTIVES TO BE REFERRED
TO 2002/95/EC AND CORRELATED SUBSEQUENT ONES

3 APPEARANCE

3.1 TEXTURE: UNLESS OTHERWISE SPECIFIED SURFACE TEXTURE SHALL BE POLISHED

3.2 PART SHALL CONFORM TO DATALOGIC STANDARD GM_SSM_004_SPP.

TYPE 'A' ACCORDING TO DATALOGIC STANDARD GM_SSM_004_SP

3.5 IF NOT OTHERWISE SPECIFIED BURRS SHALL BE ACCORDING TO
GM-SSM-004-SPP.

4. PACKAGING

4. PACKAGING

4.1 PACKAGE IN ACCORDANCE WITH DATALOGIC SUPPLIER PACKAGING STANDARD GM_SSM_002_SPP AND GM_SSM_007_SPI. ANY DAMAGE DURING SHIPMENT SHALL BE PREVENTED.

6. GENERAL REQUIREMENTS

6.1 IF NOT OTHERWISE SPECIFIED TRIM GATE FLUSH, PIN MARKS, GLOSSY AND MATTE PATCH SHALL BE ACCORDING TO

GM_SSM_004_SPP.
6.2 PARTING LINES MARK NOT ALLOWED

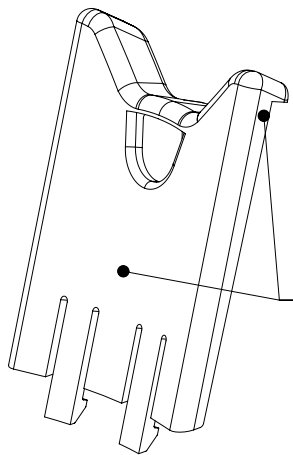
6.3 NO MOLD RELEASE ARE TO BE USED
6.4 MOLD RECYCLE SYMBOL IN AREA INDICATED (MRC)

6.5 MOLD CAVITY NUMBER IN AREA INDICATED (MCV)
6.6 MOLD PART NUMBER IN AREA INDICATED (MPN)

6.7 MOLD DATE CODE IN AREA INDICATED (MDT)
6.8 PART NUMBER IN AREA INDICATED (PN)

7. DRAWING NOTES SUPERSEDES DATALOGIC STANDARD IF



THERE IS A CONFLICT



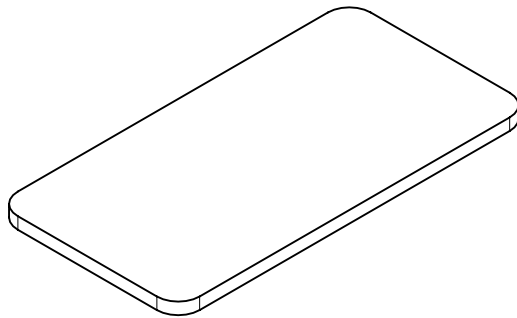
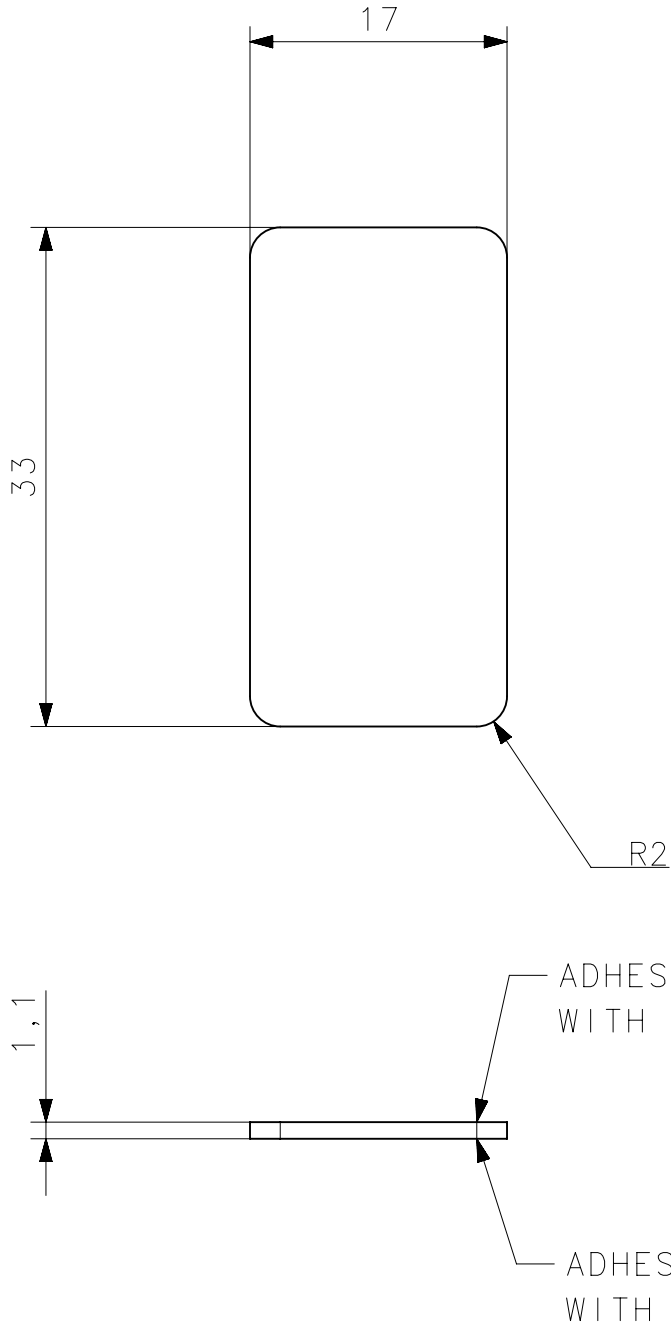
SURFACES TYPE A

SCALE 1 : 1

281091800	ADAPTER HOLDER DESK	ABS LG XR 409 H BLACK 9001	BLACK	ELECTRON DISCHARGE MACHINE VDI 21
PART N.	DESCRIPTION	MATERIAL	COLOUR	SURFACES FINISHING
VERSION TABLE				

MOD.	DRW REV.	CHANGE NUMBER	DESCRIPTION	DATE	DESIGNED BY	APPROVED BY
NOTES			DATE (dd/mm/yyyy) 04/02/2019	SCALE 2 : 1	UNIT mm	
			DESIGNED BY S. TROPOLI			
			APPROVED BY I. MUSIANI		MOLD N. 870021530	
			NAME ADAPTER HOLDER DESK	PART N. 281091800		PART REV. A
				PAGE 1 OF 1		DRW REV. 00
				PROJECT POWERSCAN		SHEET SIZE A2

Teamcenter ID: MP023122100



TOLERANCE TABLE FOR PLASTIC PART ACCORDING TO DIN 16742:2013-10													
TOLERANCE GROUP	>0 ≤-3	>3 ≤-6	>6 ≤-10	>10 ≤-18	>18 ≤-30	>30 ≤-50	>50 ≤-80	>80 ≤-120	>120 ≤-180	>180 ≤-250	>250 ≤-315	>315 ≤-400	>400 ≤-500
TG1-NW	±0.012	±0.018	±0.022	±0.026	±0.031	±0.037	±0.044	±0.050	-	-	-	-	-
TG3-NW	±0.031	±0.050	±0.06	±0.07	±0.08	±0.10	±0.15	±0.20	±0.23	±0.26	±0.29	±0.40	±0.55
TG5-NW	±0.08	±0.11	±0.14	±0.17	±0.20	±0.23	±0.36	±0.50	±0.58	±0.65	±0.70	±1	±1.4
TG7-NW	±0.2	±0.29	±0.35	±0.42	±0.5	±0.6	±0.9	±1.25	±1.45	±1.6	±1.8	±2.6	±3.5

NOTES

1. PART & DIMENSIONS

1.1 THIS PART WAS GENERATED FROM 3D CAD MODEL FILE:
TC PN MP023122/00.

1.2 GENERAL TOLERANCES **DIN 16742:2013-10**. UNLESS OTHERWISE SPECIFIED USE TOLERANCE GROUP INDICATED IN TOLERANCE TABLE

1.3 ALL DIMENSIONS AND FEATURES NOT DEFINED ON THE DRAWING SHALL BE CONTROLLED BY THE 3D MODEL.

1.4 ALL DIMENSIONS IN ROUND BRACKETS ARE ONLY FOR REFERENCE WITH TOLERANCE EXCLUDED.

2. MATERIALS

2.1 **MATERIAL AND COLOUR: SEE VERSION TABLE.**

2.2 REGULATORY CONTROLLED MATERIAL, NO SUBSTITUTIONS ALLOWED

2.3 REGRIND MATERIAL NOT ALLOWED, PART TO BE MOLDED USING 100% VIRGIN MATERIAL.

2.4 MELT VOLUME RATE SHALL BE CARRIED OUT ACCORDING TO ISO 1133;
AFTER MOLDING AN INCREASE OF 20% OF M.V.R. COMPARED TO VIRGIN MATERIAL GRAIN IS ALLOWED.

2.5 IF COLOR IS NOT A STANDARD FROM RESIN SUPPLIER, COLOR SHALL MEET VALUE IN THE 'COLOUR TABLE'.
MEASUREMENTS SHALL BE TAKEN AT LOCATION 'X1',...,'Xn'.
MEASUREMENTS SHALL BE MADE USING D65 ILLUMINANT.

2.6 MECHANICAL PROPERTIES MUST BE GUARANTEED ACCORDING TO DATALOGIC FALLING WEIGHT IMPACT STANDARD INCLUDED IN GM_SSM_004_SPP

2.7 ALL EMPLOYED MATERIAL HAVE TO BE SELECTED AMONG RoHS COMPLIANT MATERIALS: THE EC DIRECTIVES TO BE REFERRED TO 2002/95/EC AND CORRELATED SUBSEQUENT ONES

3 APPEARANCE

3.1 TEXTURE: UNLESS OTHERWISE SPECIFIED SURFACE TEXTURE SHALL BE **POLISHED**

3.2 PART SHALL CONFORM TO DATALOGIC STANDARD GM_SSM_004_SPP.

3.3 UNLESS OTHERWISE SPECIFIED SURFACES MUST BELONG TO TYPE 'A' ACCORDING TO DATALOGIC STANDARD GM_SSM_004_SPP.

3.4 FINISHED PARTS SHALL BE CLEAN AND FREE OF DIRT, GREASE.

3.5 IF NOT OTHERWISE SPECIFIED BURRS SHALL BE ACCORDING TO GM_SSM_004_SPP.

4. PACKAGING

4.1 PACKAGE IN ACCORDANCE WITH DATALOGIC SUPPLIER PACKAGING STANDARD GM_SSM_002_SPP AND GM_SSM_007_SPI. ANY DAMAGE DURING SHIPMENT SHALL BE PREVENTED.

5. CPK

5.1 USE DIMENSIONS (CPK_n) FOR CPK STUDY.

6. GENERAL REQUIREMENTS

6.1 IF NOT OTHERWISE SPECIFIED TRIM GATE FLUSH, PIN MARKS, GLOSSY AND MATTE PATCH SHALL BE ACCORDING TO GM_SSM_004_SPP.

6.2 PARTING LINES MARK NOT ALLOWED

6.3 NO MOLD RELEASE ARE TO BE USED

6.4 MOLD RECYCLE SYMBOL IN AREA INDICATED (MRC)

6.5 MOLD CAVITY NUMBER IN AREA INDICATED (MCV)

6.6 MOLD PART NUMBER IN AREA INDICATED (MPN)

6.7 MOLD DATE CODE IN AREA INDICATED (MDT)

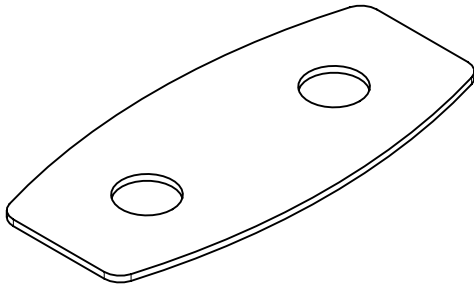
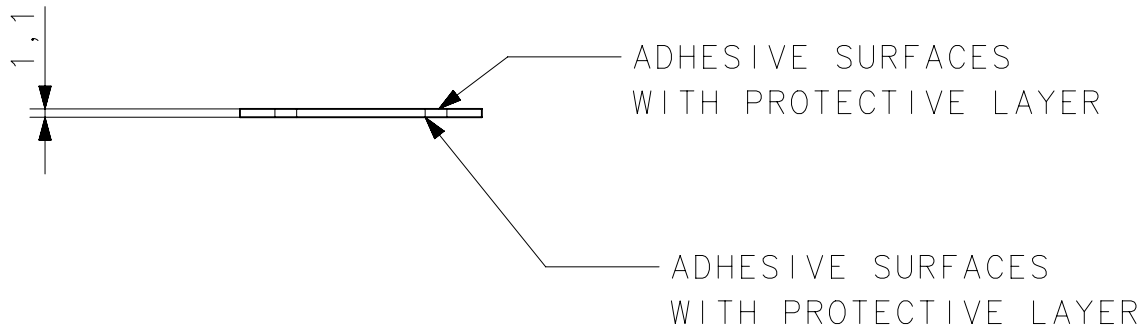
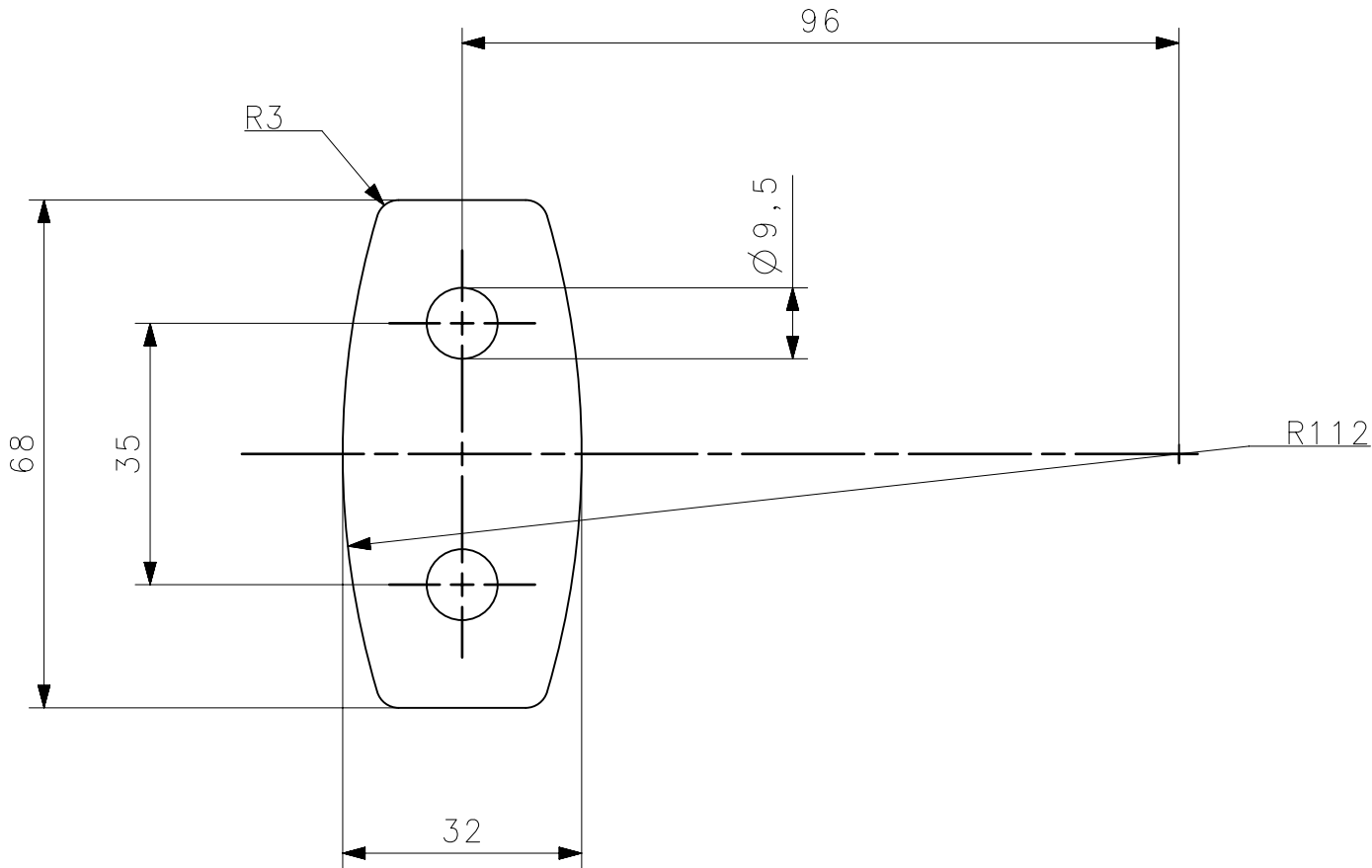
6.8 PART NUMBER IN AREA INDICATED (PN)

7. DRAWING NOTES SUPERSEDES DATALOGIC STANDARD IF THERE IS A CONFLICT

163199790	ANCILLARY ADHESIVE	BIADHESIVE Saint Gobain Z2011, Th 1.1mm	
PART N.	DESCRIPTION	MATERIAL	COLOUR
VERSION TABLE			

MOD.	DRW REV.	CHANGE NUMBER	DESCRIPTION	DATE	DESIGNED BY	APPROVED BY		
NOTES	DATE (dd/mm/yyyy) 05/02/2019			SCALE	UNIT			
	DESIGNED BY S. TROPPOLI			2:1	mm			
	APPROVED BY I. MUSIANI							
DATALOGIC				NAME		PART N.	PART REV.	
				ANCILLARY ADHESIVE		163199790		A
						PAGE 1 OF 1		DRW REV. 00
						PROJECT POWERSCAN		SHEET SIZE A3

Teamcenter ID: MP023121 00



TOLERANCE TABLE FOR PLASTIC PART ACCORDING TO DIN 16742:2013-10													
TOLERANCE GROUP	>0 ≤-3	>3 ≤-6	>6 ≤-10	>10 ≤-18	>18 ≤-30	>30 ≤-50	>50 ≤-80	>80 ≤-120	>120 ≤-180	>180 ≤-250	>250 ≤-315	>315 ≤-400	>400 ≤-500
TG1-NW	±0.012	±0.018	±0.022	±0.026	±0.031	±0.037	±0.044	±0.050	-	-	-	-	-
TG3-NW	±0.031	±0.050	±0.06	±0.07	±0.08	±0.10	±0.15	±0.20	±0.23	±0.26	±0.29	±0.40	±0.55
TG5-NW	±0.08	±0.11	±0.14	±0.17	±0.20	±0.23	±0.36	±0.50	±0.58	±0.65	±0.70	±1	±1.4
TG7-NW	±0.2	±0.29	±0.35	±0.42	±0.5	±0.6	±0.9	±1.25	±1.45	±1.6	±1.8	±2.6	±3.5

NOTES

1. PART & DIMENSIONS
- 1.1 THIS PART WAS GENERATED FROM 3D CAD MODEL FILE:
TC PN MP023121/00.
- 1.2 GENERAL TOLERANCES **DIN 16742:2013-10**. UNLESS OTHERWISE SPECIFIED USE TOLERANCE GROUP INDICATED IN TOLERANCE TABLE
- 1.3 ALL DIMENSIONS AND FEATURES NOT DEFINED ON THE DRAWING SHALL BE CONTROLLED BY THE 3D MODEL.
- 1.4 ALL DIMENSIONS IN ROUND BRACKETS ARE ONLY FOR REFERENCE WITH TOLERANCE EXCLUDED.

2. MATERIALS

- 2.1 MATERIAL AND COLOUR: SEE VERSION TABLE.
- 2.2 REGULATORY CONTROLLED MATERIAL, NO SUBSTITUTIONS ALLOWED
- 2.3 REGRIND MATERIAL NOT ALLOWED, PART TO BE MOLDED USING 100% VIRGIN MATERIAL.
- 2.4 MELT VOLUME RATE SHALL BE CARRIED OUT ACCORDING TO ISO 1133;
AFTER MOLDING AN INCREASE OF 20% OF M.V.R. COMPARED TO VIRGIN MATERIAL GRAIN IS ALLOWED.
- 2.5 IF COLOR IS NOT A STANDARD FROM RESIN SUPPLIER, COLOR SHALL MEET VALUE IN THE 'COLOUR TABLE'.
MEASUREMENTS SHALL BE TAKEN AT LOCATION 'X1',...,'Xn'.
MEASUREMENTS SHALL BE MADE USING D65 ILLUMINANT.
- 2.6 MECHANICAL PROPERTIES MUST BE GUARANTEED ACCORDING TO DATALOGIC FALLING WEIGHT IMPACT STANDARD INCLUDED IN GM_SSM_004_SPP
- 2.7 ALL EMPLOYED MATERIAL HAVE TO BE SELECTED AMONG RoHS COMPLIANT MATERIALS: THE EC DIRECTIVES TO BE REFERRED TO 2002/95/EC AND CORRELATED SUBSEQUENT ONES

3. APPEARANCE

- 3.1 TEXTURE: UNLESS OTHERWISE SPECIFIED SURFACE TEXTURE SHALL BE **POLISHED**
- 3.2 PART SHALL CONFORM TO DATALOGIC STANDARD GM_SSM_004_SPP.
- 3.3 UNLESS OTHERWISE SPECIFIED SURFACES MUST BELONG TO TYPE 'A' ACCORDING TO DATALOGIC STANDARD GM_SSM_004_SPP.
- 3.4 FINISHED PARTS SHALL BE CLEAN AND FREE OF DIRT, GREASE.
- 3.5 IF NOT OTHERWISE SPECIFIED BURRS SHALL BE ACCORDING TO GM_SSM_004_SPP.

4. PACKAGING

- 4.1 PACKAGE IN ACCORDANCE WITH DATALOGIC SUPPLIER PACKAGING STANDARD GM_SSM_002_SPP AND GM_SSM_007_SPI. ANY DAMAGE DURING SHIPMENT SHALL BE PREVENTED.

5. CPK

- 5.1 USE DIMENSIONS (CPK_n) FOR CPK STUDY.

6. GENERAL REQUIREMENTS

- 6.1 IF NOT OTHERWISE SPECIFIED TRIM GATE FLUSH, PIN MARKS, GLOSSY AND MATTE PATCH SHALL BE ACCORDING TO GM_SSM_004_SPP.
- 6.2 PARTING LINES MARK NOT ALLOWED
- 6.3 NO MOLD RELEASE ARE TO BE USED
- 6.4 MOLD RECYCLE SYMBOL IN AREA INDICATED (MRC)
- 6.5 MOLD CAVITY NUMBER IN AREA INDICATED (MCV)
- 6.6 MOLD PART NUMBER IN AREA INDICATED (MPN)
- 6.7 MOLD DATE CODE IN AREA INDICATED (MDT)
- 6.8 PART NUMBER IN AREA INDICATED (PN)

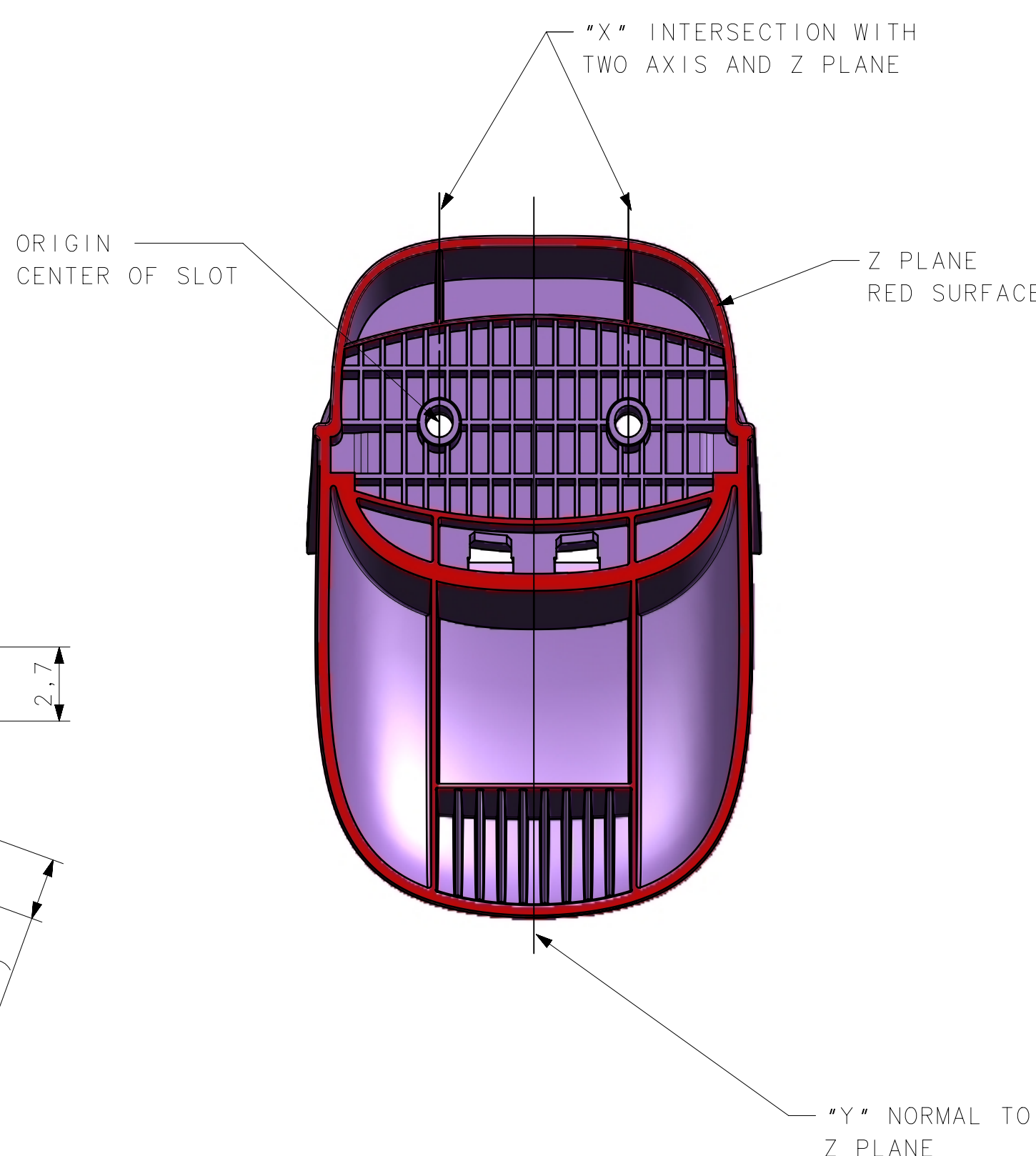
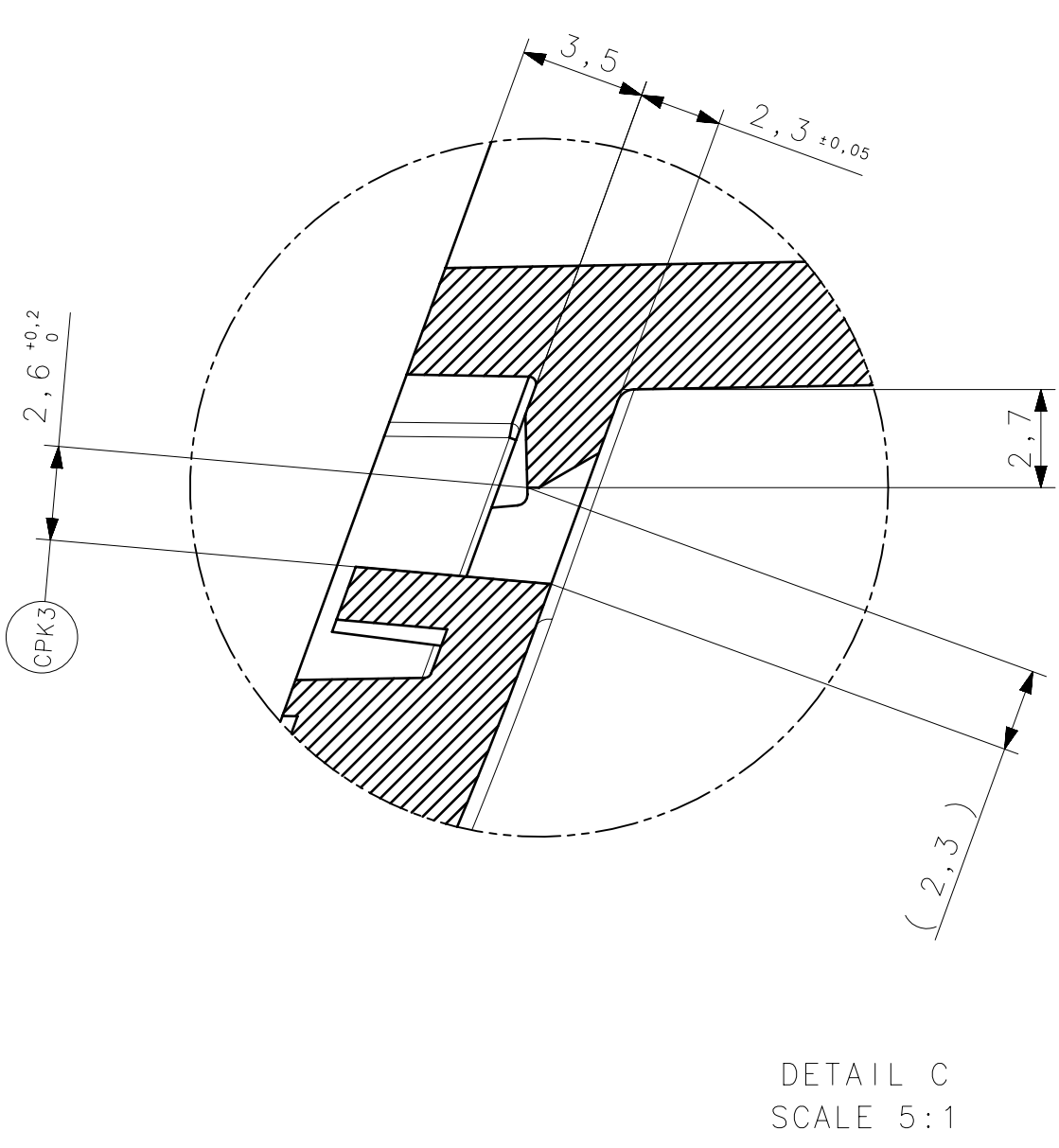
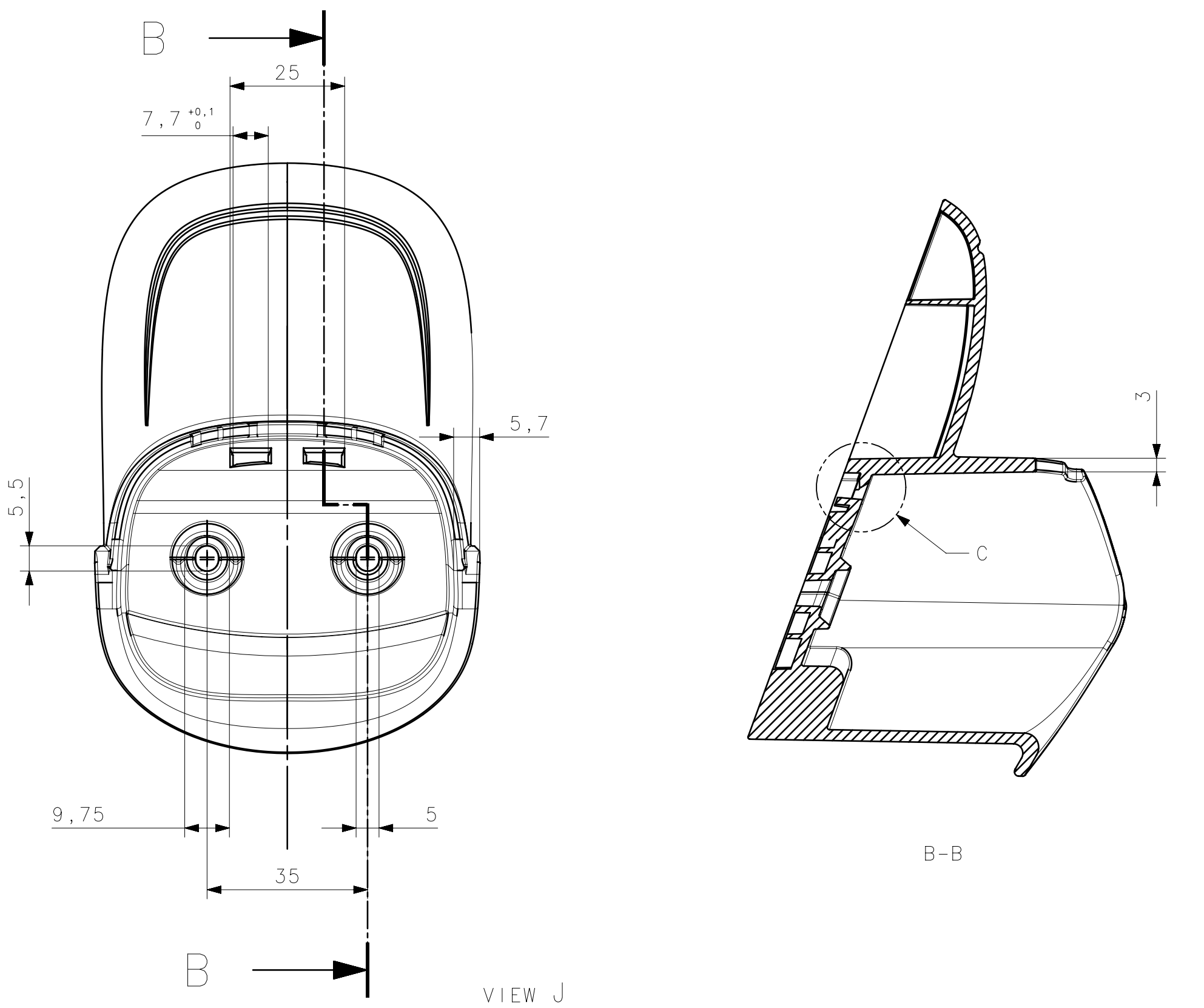
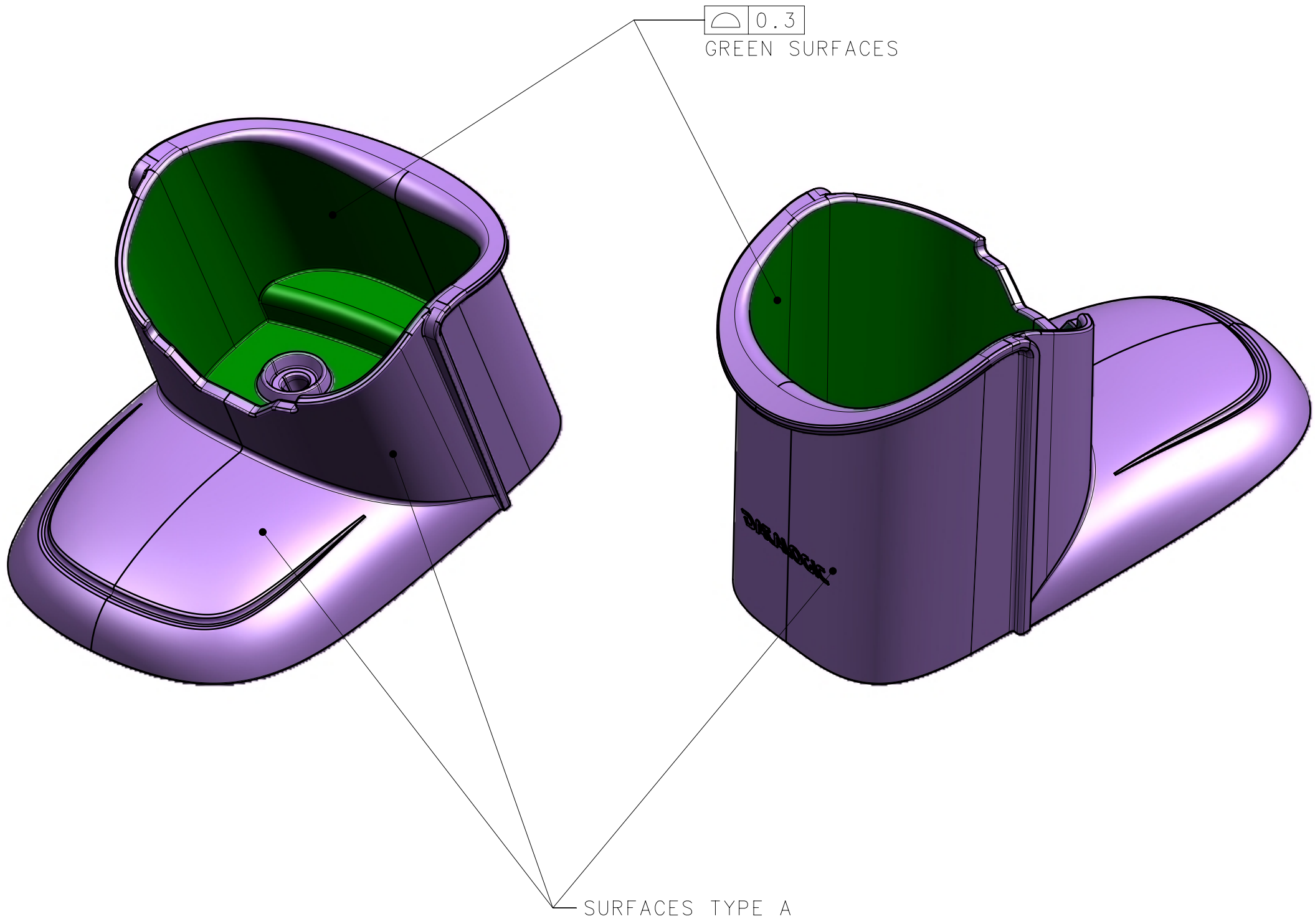
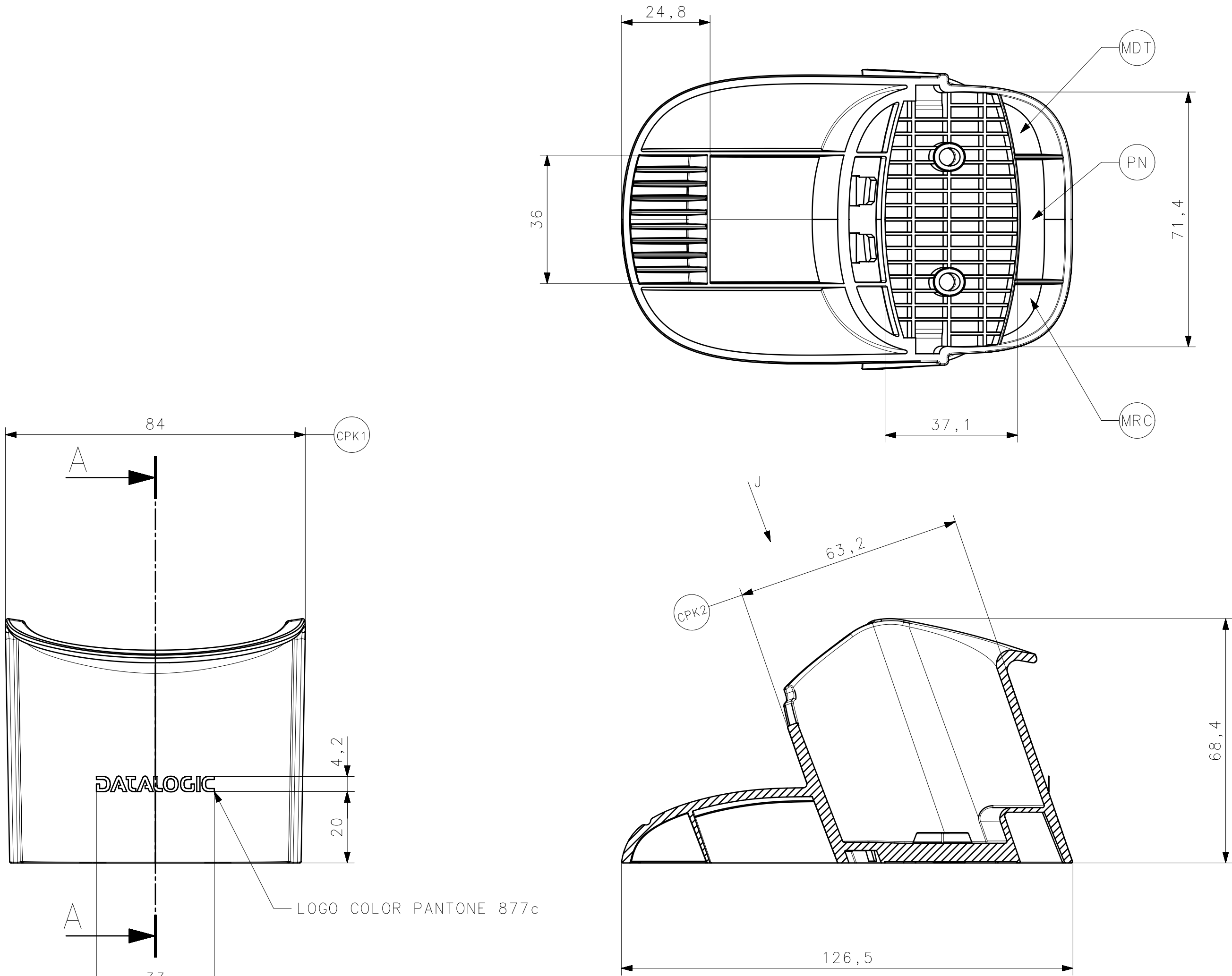
7. DRAWING NOTES SUPERSEDES DATALOGIC STANDARD IF THERE IS A CONFLICT

163199690	MAIN ADESIVE	BIADHESIVE Saint Gobain Z2011, Th 1.1mm	
PART N.	DESCRIPTION	MATERIAL	COLOUR
VERSION TABLE			

MOD.	DRW REV.	CHANGE NUMBER	DESCRIPTION	DATE	DESIGNED BY	APPROVED BY
NOTES	DATE (dd/mm/yyyy)	05/02/2019	SCALE	UNIT		
	DESIGNED BY	S.TROPPOLI	1 : 1	mm		
	APPROVED BY	I.MUSIANI	MOLD N.			
			NAME	PART N.	PART REV.	
			MAIN ADESIVE	163199690	A	
				PAGE 1 OF 1	00	
			PROJECT	P-8	SHEET SIZE A3	

TOLERANCE TABLE FOR PLASTIC PART ACCORDING TO DIN 16742:2013-10											
TOLERANCE GROUP	>0	>3	>8	>10	>18	>30	>50	>80	>120	>180	>250
	±0.1	±0.15	±0.2	±0.25	±0.3	±0.4	±0.5	±0.6	±0.8	±1.0	±1.2
TOL-NR	10.01	10.02	10.03	10.04	10.05	10.06	10.07	10.08	10.09	10.10	10.11
TOL-NR	10.01	10.02	10.03	10.04	10.05	10.06	10.07	10.08	10.09	10.10	10.11
TOL-NR	10.01	10.02	10.03	10.04	10.05	10.06	10.07	10.08	10.09	10.10	10.11
TOL-NR	10.01	10.02	10.03	10.04	10.05	10.06	10.07	10.08	10.09	10.10	10.11

- NOTES
1. PART & DIMENSIONS
1.1 THIS PART WAS GENERATED FROM 3D CAD MODEL FILE:
TO: PH MP023101/00.
1.2 GENERAL TOLERANCES: DIN 16742:2013-10, UNLESS OTHERWISE SPECIFIED USE TOLERANCE GROUP INDICATED IN TOLERANCE TABLE.
1.3 ALL DIMENSIONS AND FEATURES NOT DEFINED ON THE DRAWING SHALL BE CONTROLLED BY THE 3D MODEL.
1.4 ALL DIMENSIONS IN ROUND BRACKETS ARE ONLY FOR REFERENCE WITH TOLERANCE EXCLUDED.
 2. MATERIALS
2.1 MATERIAL AND COLOUR: SEE VERSION TABLE.
2.2 REGULATORY CONTROLLED MATERIAL, NO SUBSTITUTIONS ALLOWED.
2.3 REGRIND MATERIAL, NOT ALLOWED, PART TO BE MOLDED USING 100% VIRGIN MATERIAL.
2.4 MELT VOLUME RATE SHALL BE CARRIED OUT ACCORDING TO ISO 11331.
2.5 IF COLOR IS NOT A STANDARD FROM RESIN SUPPLIER, COLOR SHALL MEET VALUE IN THE 'COLOUR TABLE'.
2.6 MECHANICAL PROPERTIES MUST BE GUARANTEED ACCORDING TO DATALOGIC FALLING WEIGHT IMPACT STANDARD INCLUDED IN QM_SSM_004_SPP.
2.7 ALL EMPLOYED MATERIAL HAVE TO BE SELECTED AMONG RHHS COMPLIANT MATERIALS: THE EC DIRECTIVES TO BE REFERRED TO 2002/95/EC AND CORRELATED SUBSEQUENT ONES.
 3. APPEARANCE
3.1 TEXTURE: UNLESS OTHERWISE SPECIFIED SURFACE TEXTURE SHALL BE POLISHED.
3.2 PART SHALL CONFORM TO DATALOGIC STANDARD QM_SSM_004_SPP.
3.3 UNLESS OTHERWISE SPECIFIED SURFACES MUST BELONG TO TYPE 'A' ACCORDING TO DATALOGIC STANDARD QM_SSM_004_SPP.
3.4 FINISHED PARTS SHALL BE CLEAN AND FREE OF DIRT, GREASE.
3.5 IF NOT OTHERWISE SPECIFIED BURRS SHALL BE ACCORDING TO QM_SSM_004_SPP.
 4. PACKAGING
4.1 PACKAGE IN ACCORDANCE WITH DATALOGIC SUPPLIER PACKAGING STANDARD QM_SSM_002_SPP AND QM_SSM_007_SPP. ANY DAMAGE DURING SHIPMENT SHALL BE PREVENTED.
 5. CPK
5.1 USE DIMENSIONS (CPKs) FOR CPK STUDY.
 6. GENERAL REQUIREMENTS
6.1 IF NOT OTHERWISE SPECIFIED TRIM GATE FLUSH, PIN MARKS, GLOSSY AND MATTE PATCH SHALL BE ACCORDING TO QM_SSM_004_SPP.
6.2 PARTING LINES MARK NOT ALLOWED.
6.3 NO MOLD RELEASE ARE TO BE USED.
6.4 MOLD RECYCLE SYMBOL IN AREA INDICATED (MRC).
6.5 MOLD CAVITY NUMBER IN AREA INDICATED (MCV).
6.6 MOLD PART NUMBER IN AREA INDICATED (MPN).
6.7 MOLD DATE CODE IN AREA INDICATED (MDD).
6.8 PART NUMBER IN AREA INDICATED (PN).
 7. DRAWING NOTES SUPERSEDES DATALOGIC STANDARD IF THERE IS A CONFLICT



GENERAL GEOMETRIC TOLERANCES
0.1 (UNLESS DIFFERENTLY SPECIFIED)

278198500	HOLDER DESK	ABS LG XR 409 H BLACK 9001	BLACK	ELECTRON DISCHARGE MACHINE VDI 21
PART N.	DESCRIPTION	MATERIAL	COLOUR	SURFACES FINISHING
VERSION TABLE				

MOD.	OPW REV.	CHANGE NUMBER	DESCRIPTION	DATE	DESIGNED BY	APPROVED BY
NOTES	DATE (dd/mm/yyyy)	04/02/2019	SCALE	UNIT	1:1	mm
DESIGNED BY	S. TROPPOLO	APPROVED BY	I. MUSIANI	MOLD N.	870021540	PART REV.
NAME						
278198500			A			REV. REV.
PAGE 1 OF 1			00			PRINT DATE
PROJECT			POWERSCAN			AI



HOLDER DESK

DATALOGIC