

## Updating the Magellan 32/3300 Single Plane Scanners

What you need:

USB A to micro USB B type (same cable as what an android phone uses)

Scanalyzer Configuration Software

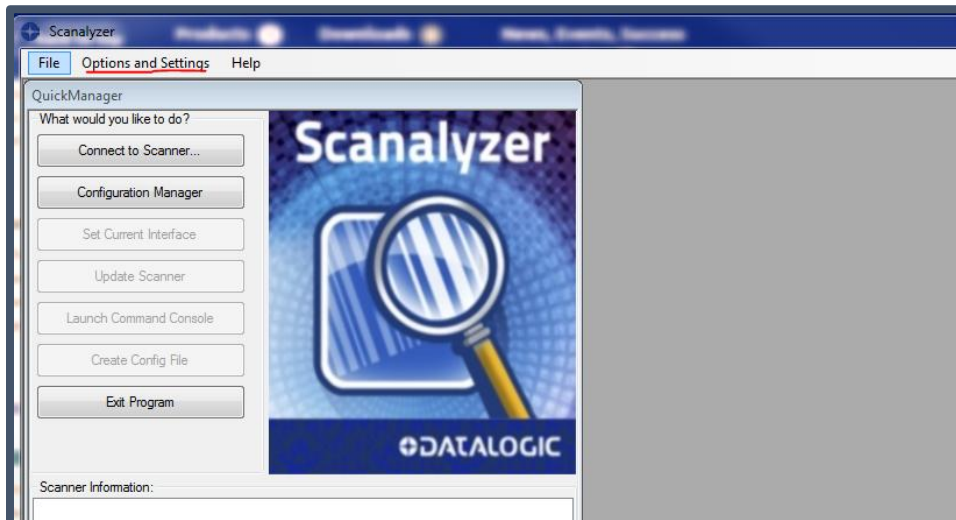
<https://cdn.datalogic.com/Download?iddwnfile=33693>

User guide: <https://cdn.datalogic.com/Download?iddwnfile=11514>

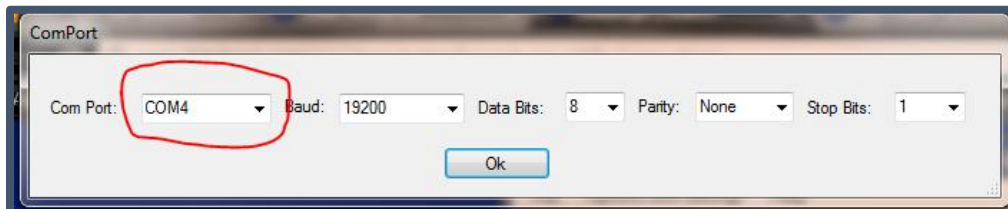
USB Com driver: <https://cdn.datalogic.com/Download?iddwnfile=22082>

Once you have installed the USB com driver then plug the micro USB cable into the port under the little rubber membrane. The connection will create a new comport. Find out what the port is because we will have to set that in Scanalyzer.

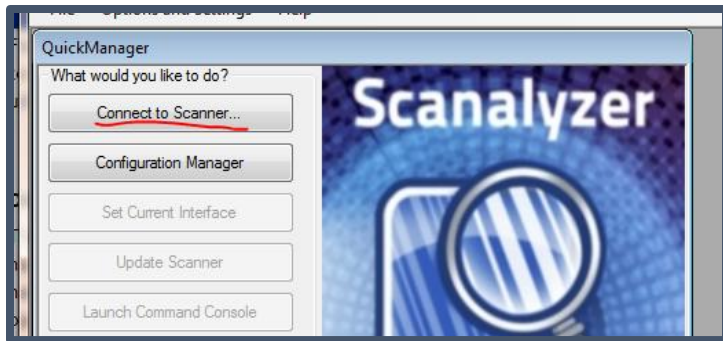
Once you open up Scanalyzer click on Options and Settings and Set Comport.



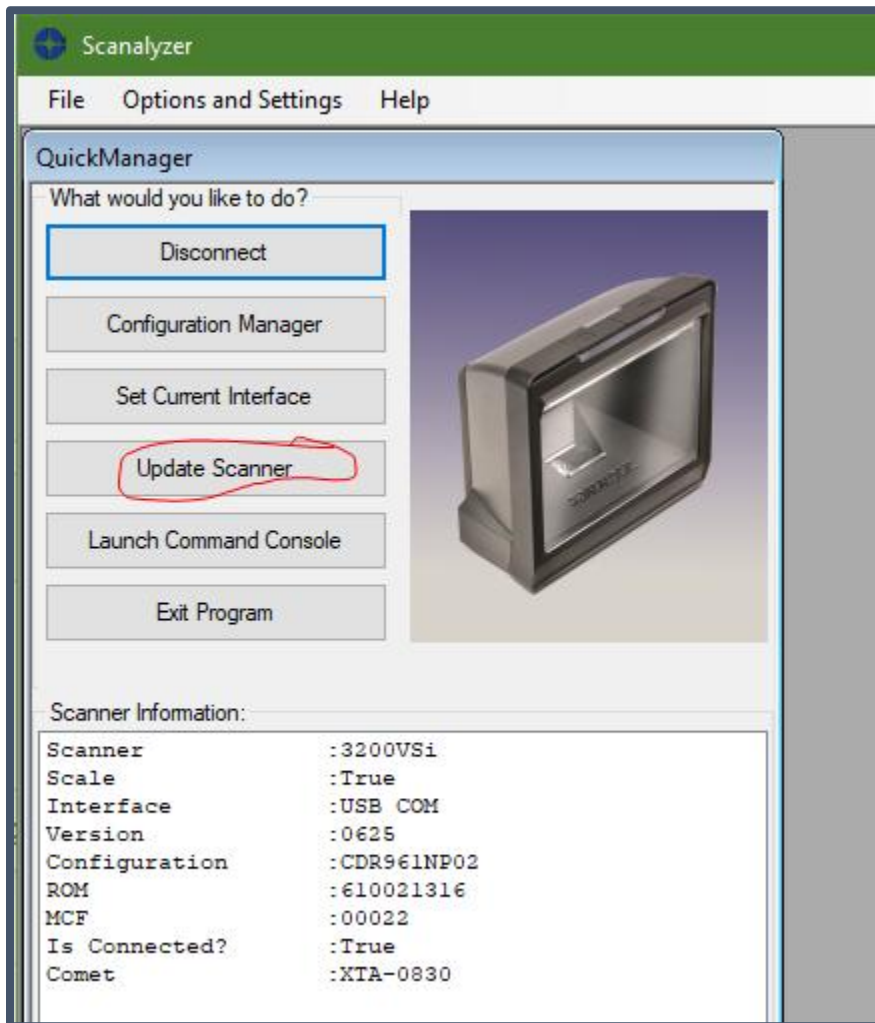
Select your comport here and click Ok.



Now click on Connect to Scanner.



It will load and provide scanner information at the bottom. Then click on Update Scanner.



Click on the Browse to find the new firmware file and the configuration file

### Update Firmware

Select

Flash Configuration Only

Flash Application Only

Both App and Config

Update Close

Application File Name: Browse

Configuration File Name: Browse

Firmware Update Progress

Configuration Update Progress

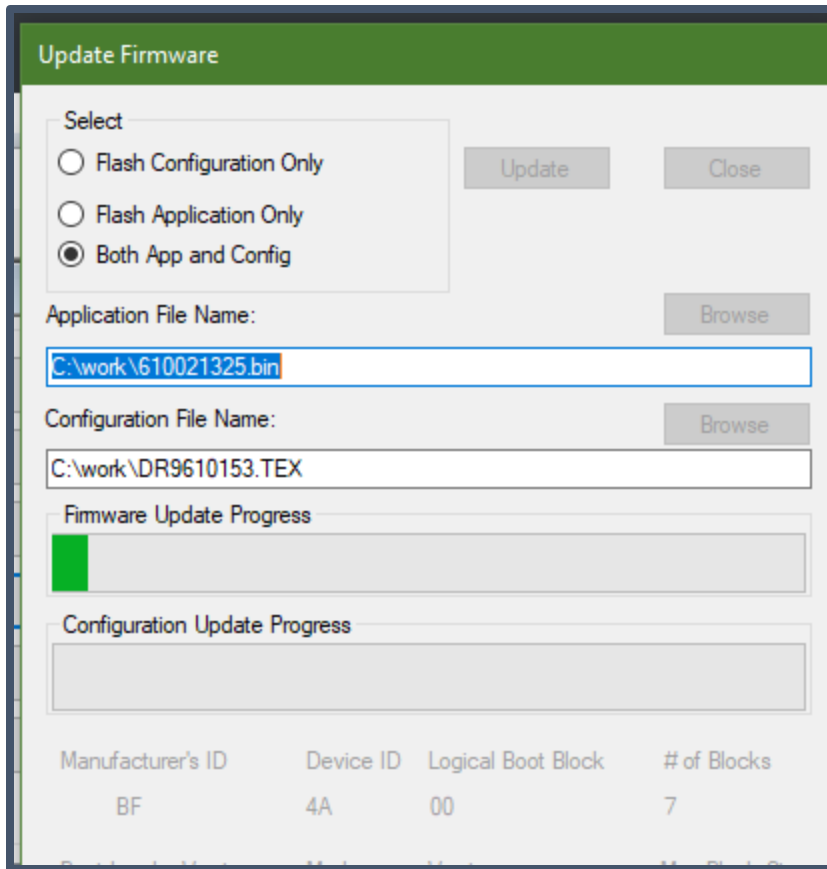
Manufacturer's ID	Device ID	Logical Boot Block	# of Blocks
Boot Loader Version	Mode	Version	Max Block Size

Start Address	Block Type
---------------	------------

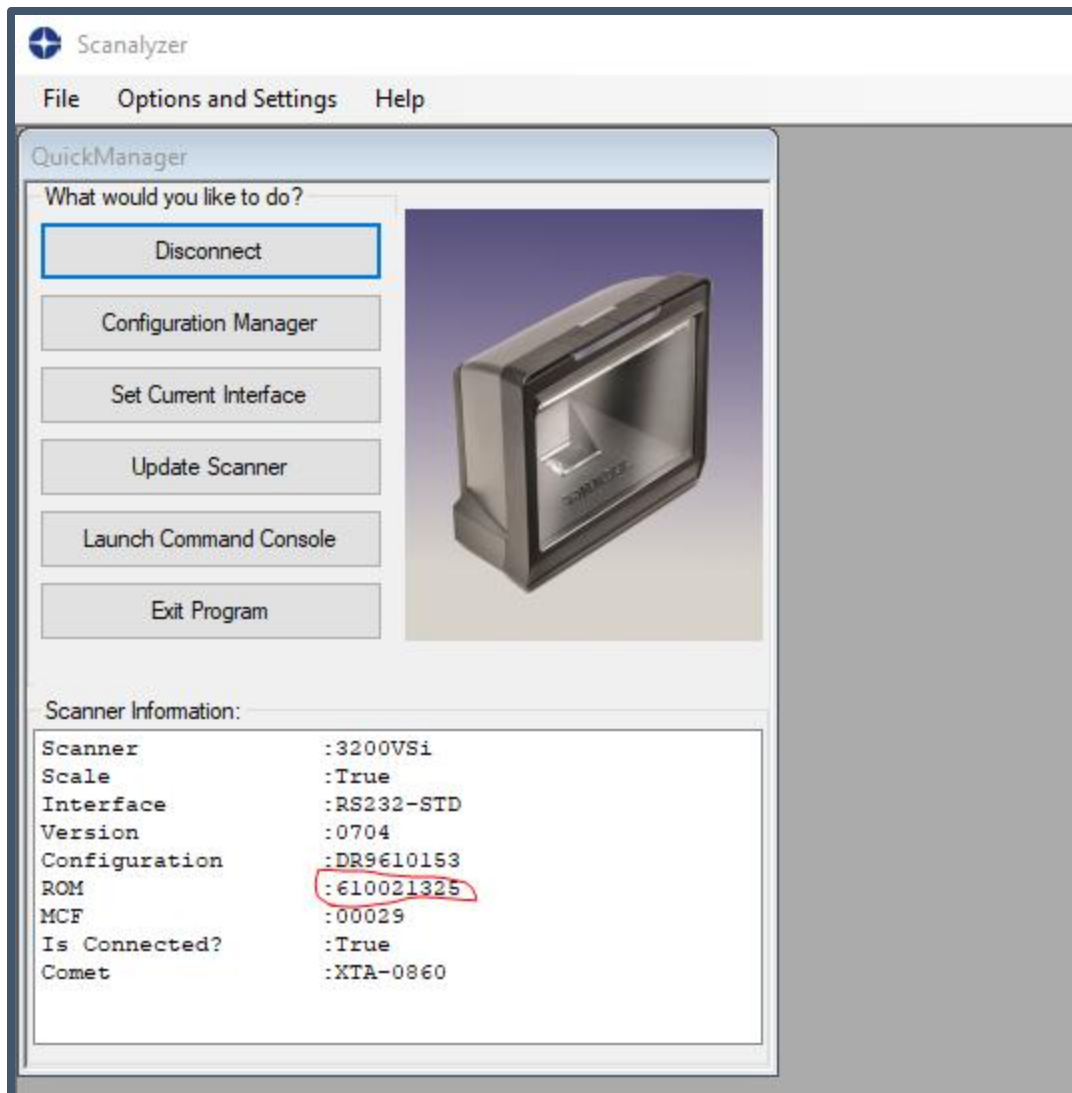
Once you have the files selected click on the update button.

The image shows a software dialog box titled "Update Firmware". It contains a "Select" section with three radio buttons: "Flash Configuration Only", "Flash Application Only", and "Both App and Config" (which is selected). To the right of these buttons are "Update" and "Close" buttons. The "Update" button is circled in red. Below the selection section are two text input fields. The first is labeled "Application File Name:" and contains the text "C:\work\610021325.bin", with a "Browse" button to its right. The second is labeled "Configuration File Name:" and contains the text "C:\work\DR9610153.TEX", also with a "Browse" button to its right. At the bottom of the dialog, there are two empty progress bars labeled "Firmware Update Progress" and "Configuration Update Progress".

Status bar will show you the progress.



After it is done loading the firmware you can disconnect the scanner and reconnect to make sure the new ROM matches what you loaded.



For these scanners a config file always needs to be loaded as well. You cannot just load the firmware.

